



MAKE IT

**THE
GROWING
SCHOOLS GARDEN**

**LEARNING OUTSIDE
THE CLASSROOM**

Stumpery and Evolutionary Path

Minibeasts

MAKE IT

Minibeasts



Description

The exploration of minibeasts in the varied habitats of the garden is to be encouraged and, as a part of understanding the relationships between organisms and their roles in the garden, models of the minibeasts are to be enlarged, exaggerated and enhanced. Imagine wandering into a wood where the insects are several thousand times their actual size.

Function

Beetles, spiders, ants and all manner of creepy crawlies can be modelled and crafted into enlarged features. Some minibeasts may perform a function, such as a beetle being crafted into a seat, others may be purely decorative.

Location

Located in various areas of the garden, these features can be designed as ground dwellers, on trees, walls etc. to reflect their natural habitat.

MAKE IT

Construction

Sizes

Various sizes from a few centimetres in height to over one metre.

Special Details

- Be as creative as possible in the making of these features, they should bring the microscopic world to life.
- Webs and nests can also form a part of the modelling.
- A range of beasts is required to reflect the different habitats within the show garden such as woodland, grassland, ponds etc.
- Water-based creatures can be exhibited either on or under the water.

Materials

Recycled materials including wood, metal, glass and plastic may be used.

Contributing schools

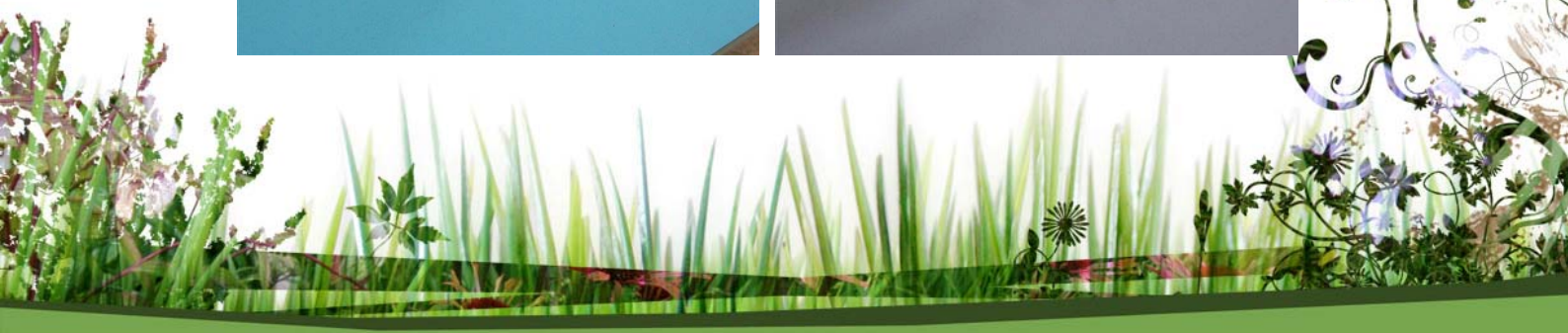
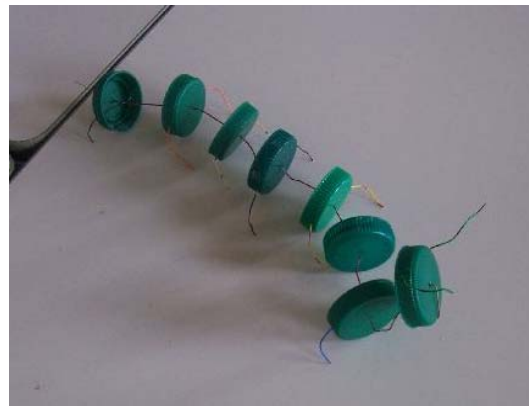
St Johns C. of E. Primary School, Kent

The minibeast designs were created by the children, and a local 'creative' volunteer helped the children to put their ideas into practice. They were insistent that the caterpillar should be climbing up the stalk of a flower.



MAKE IT

Portway Junior School, Hampshire



MAKE IT

Sidestrand Hall School, Norfolk

We made three prefabricated spiders, a spider's web and flies for the web. These were made from rhododendron wood, which is a pest and is normally burned so ecologically it is a real find. (Go to the Stumpery and Evolutionary Path garden zone for a short film of this feature being created.)



MAKE IT

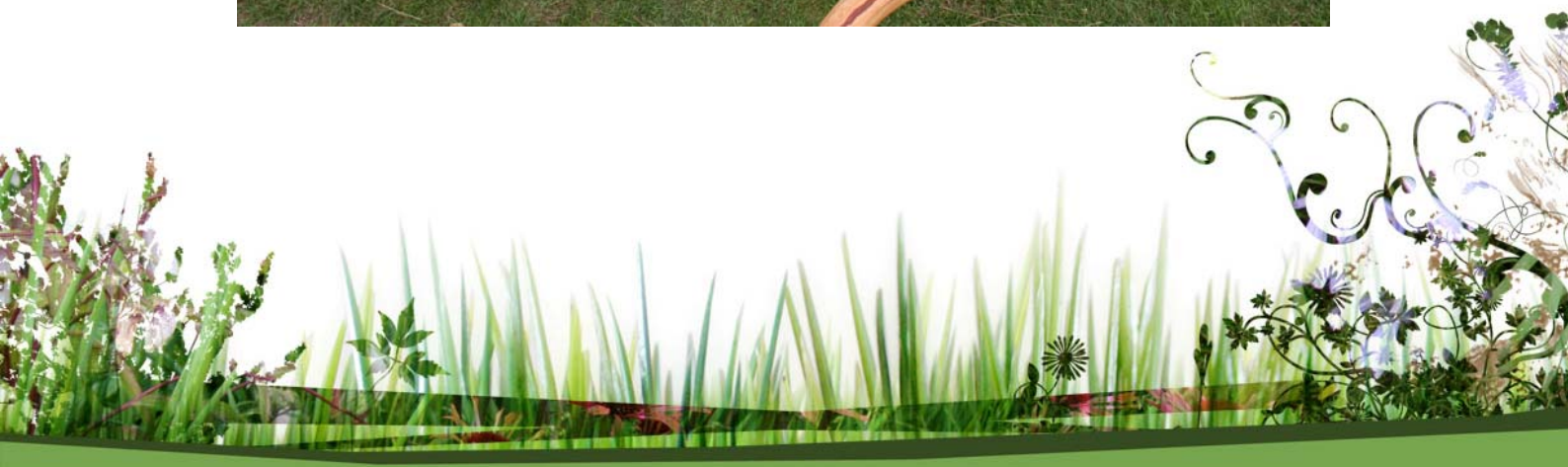
The Coombes Infant School

Our artist in residence this term was wire artist Celia Smith who worked with the children to create three wire sculptures of swans for our grounds. The small wire insects created by the children are an extension of this work and reflect the pond dipping and minibeast observations that we have been doing during the last few weeks. They are simple to create and use wire recycled from surplus cabling.

In the Growing Schools Garden



MAKE IT



MAKE IT

