



**MAKE IT**

**THE  
GROWING  
SCHOOLS GARDEN**

**LEARNING OUTSIDE  
THE CLASSROOM**

Food and Farming Zone

# Apple Tree Ceramic Reliefs

# MAKE IT

## Apple tree ceramic reliefs



## Contributing school

### **Broadlands Primary School, Hereford**

Three tactile Herefordshire Apple Tree Ceramic Reliefs were produced for the garden. In order to produce these, every pupil in the school made a clay half apple. The apples were made from clay of the same type as that traditionally quarried in Herefordshire, evoking this traditional industry. To form the reliefs many of the apples were fixed to three wooden trees cut out of marine ply, along with contrasting impressed bark tiles with added mini beasts to form the trunks. The remaining apples will be used to produce matching reliefs to be placed around the school.

# MAKE IT



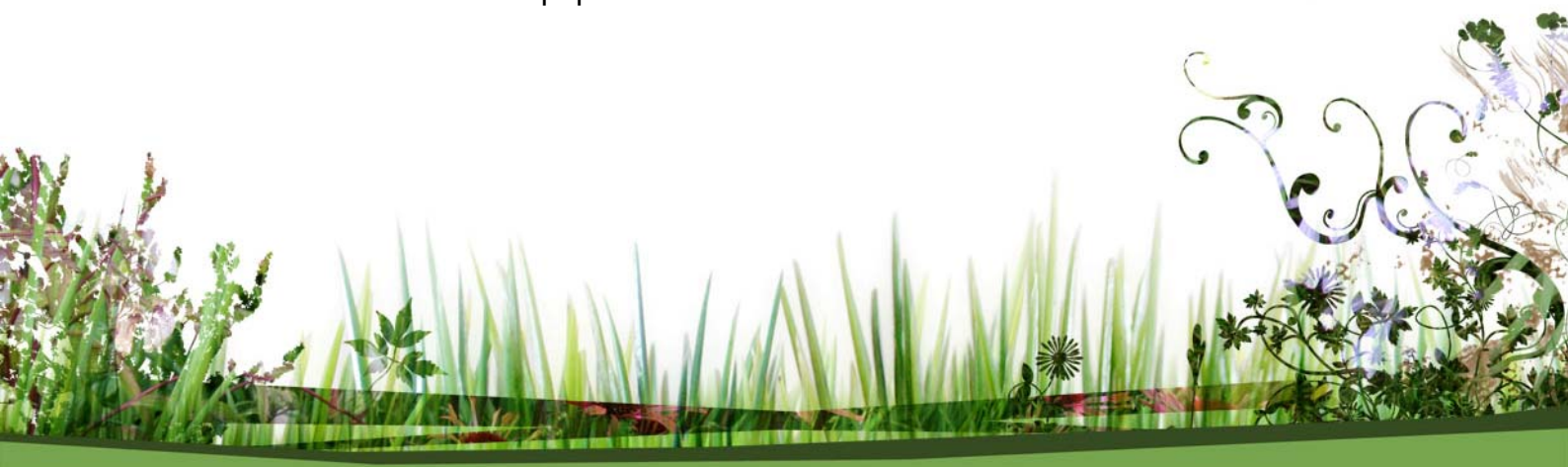
# MAKE IT



# MAKE IT



*'I enjoyed squishing the real bark onto the clay and sticking the clay bark onto the tree.'* Year 2 pupil.



# MAKE IT

In the Growing Schools Garden

